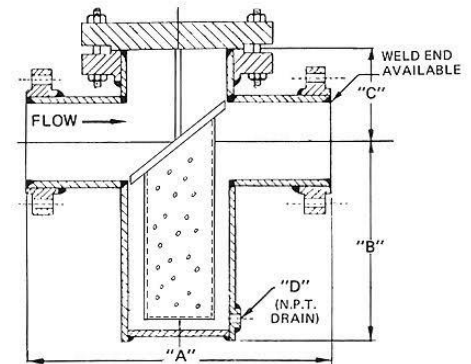


# PFA Lined Basket Type Strainer

- Elite lined strainer is the corrosion resistant equipment that used in a variety of corrosive services for the removal of debris from the pipeline or solid particles from the media.
- The unique design allows the strainer to be easily removed for cleaning or replacement. Impurity substance stops at PTFE screen so that the purity flow can go through the strainer. After a period of time, take out the dismountable filter screen tub, and it can be reassembled after cleaning. Therefore it is easy maintenance.
- Elite has various filter structure design with replaceable filter parts, and standard flange connection.
- 4. Screen size of Elite lined strainer ranges from 16 to 100 meshes, and 16 meshes as standard.
- By far the lined strainer is widely used in petroleum, chemical pharmaceutical and environmental protection industries. It can not only enlarge the lifespan of pump and other equipment, but also ensure the safety of the complete system. Lined strainer becomes the indispensable equipment for industrial production.



<b>Body Material</b>	WCB, ASTM A395 , CF8 ,CF8M
<b>Lining Material</b>	PTFE , PFA , PO ,FEP
<b>Screen Material</b>	PTFE
<b>Nominal Diameter</b>	1/2"-14"(DN15~DN350)
<b>Pressure Range</b>	Class150 , PN10 , PN16

Model NO.: GL41PFA  
 Liner: PFA  
 Flange Standard: Asme B16.5  
 Transport Package: Plywood Case

Body Material: Wcb + PFA  
 Temperature: -20~180  
 Specification: CE, ISO9001, SGS, TS